



**“I chose you and appointed you so that
you could go and produce fruit and so
that your fruit could last.”**

John 15:16b

Vital Invitation

**Vital: Churches Changing
Communities and the World**



Vital

PASTOR

LAY LEADERSHIP

WORSHIP

SMALL GROUPS

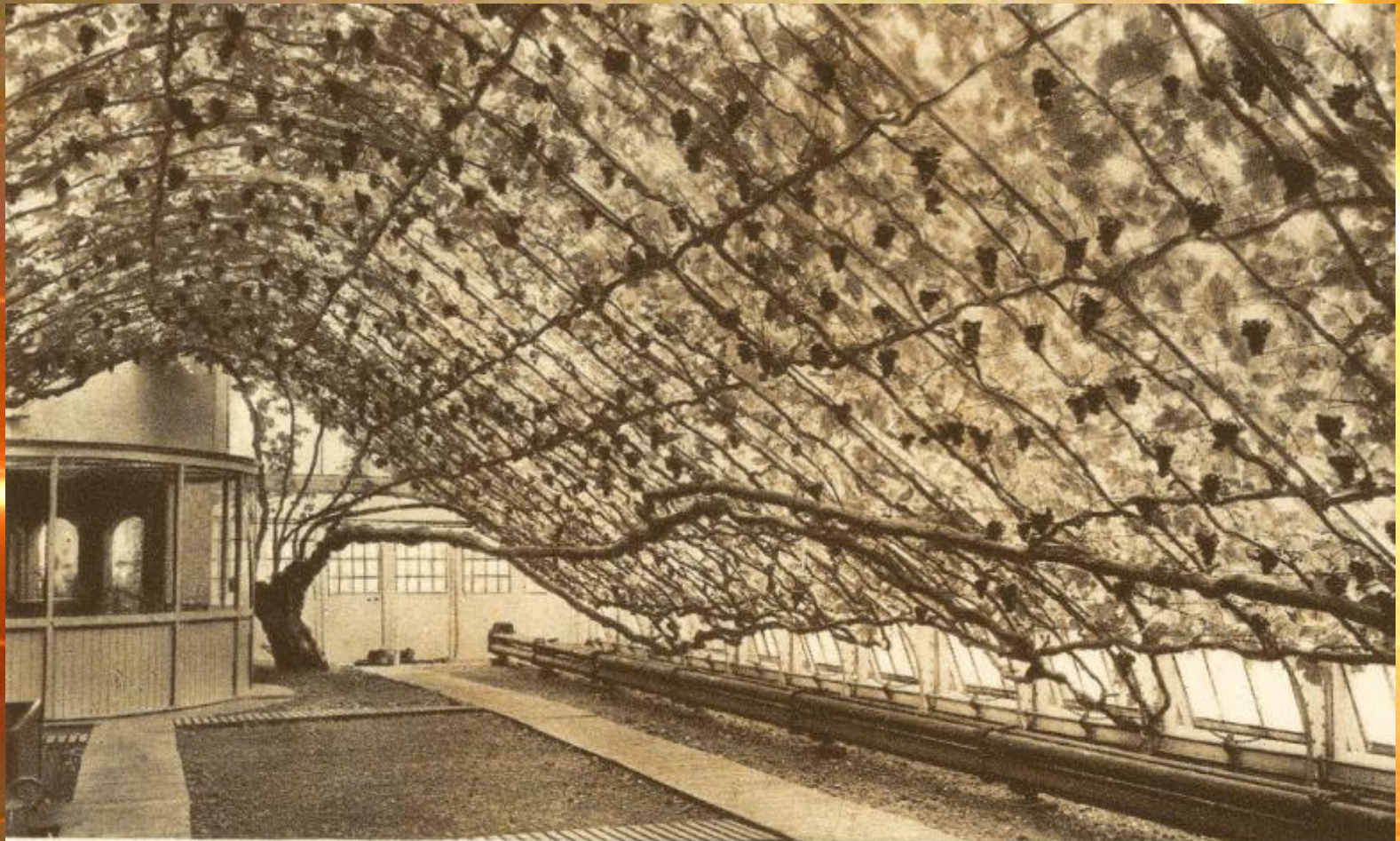
MISSION

Churches Changing Communities and the World

Jorge Acevedo

foreword by John Schol





G.11

HAMPTON COURT PALACE
THE GREAT VINE

H. M. Office of Works



Alamy AAKBFC

¹ “I am the true vine, and my Father is the vineyard keeper. ² He removes any of my branches that don’t produce fruit, and he trims any branch that produces fruit so that it will produce even more fruit. ³ You are already trimmed because of the word I have spoken to you.

JOHN 15:1-8 (CEB)



**God prunes His Church
so it can be more fruitful**



VITAL INVITATION

⁴ Remain in me, and I will remain in you. A branch can't produce fruit by itself, but must remain in the vine. Likewise, you can't produce fruit unless you remain in me. ⁵ I am the vine; you are the branches. If you remain in me and I in you, then you will produce much fruit. Without me, you can't do anything. ⁶ If you don't remain in me, you will be like a branch that is thrown out and dries up. Those branches are gathered up, thrown into a fire, and burned. ⁷ If you remain in me and my words remain in you, ask for whatever you want and it will be done for you.

JOHN 15:1-8 (CEB)

**God prunes His
Church so it can
be more fruitful**

**The Church stays
faithful when it
stays connected to
Jesus**

VITAL INVITATION

⁸ My Father is glorified when you produce much fruit and in this way prove that you are my disciples.

JOHN 15:1-8 (CEB)

**God prunes
His Church so
it can be more
fruitful**

**The Church
stays faithful
when it stays
connected to
Jesus**

**God designs
His Church to
be fruitful**

VITAL INVITATION



*“You didn’t choose me, but I chose you
and appointed you so that you could go
and produce fruit and so that your fruit
could last.”*

John 15:16a

A glowing yellow line graph is plotted on a grid background. The graph starts at a low level, rises to a peak, falls to a trough, rises to a higher peak, and then levels off to the right. The background has a textured orange and green gradient with some faint circuit-like patterns.

**How well do you
really know our
community?**